



SOUTHERN TRAILS

ISSUE 350 July 2008



C O N T E N T S

Directory	2	Snowy Mountains Challenge	32
Presidents (RO'S) Ponderings	4	The Wheels of Life	33
Special General Meeting	5	Changes to By-Laws	36
Talooge Topics	6	Members' ads	38
Keeping us on Track	8	Service Directory	39
Publisher	9	New Member application form	40
Trips and Events Calendar	12		
Flickr	18		
4WD Association Bulletin	22	e	
Simpson Desert	24		

**General meetings are held at the Canberra Deakin Football Club, Grose St, Deakin
at 7.30 pm
on the second Tuesday of each month.**

Next General Meeting— 12th August.

**The deadline for material to be included in the next issue of
Southern Trails is the Friday following the General Meeting.**

Many members contribute photos to Southern Trails. Special thanks this month to Mick Hines.

SOUTHERN TRAILS - is the magazine of the ST4WDC Incorporated,
PO Box 661, Fyshwick ACT 2609.
Registered by Australia Post
Print Post No. PP248831/00046
National Library Catalogue No. ISSN 0314-0814
Web Address <http://www.st4wdc.org>

The opinions expressed in the articles and letters in this magazine are not necessarily those of the The Southern Tablelands Four Wheel Drive Club.

This edition of Southern Trails was printed by: INSTANT COLOUR PRESS, 21 RAE ST, BELCONNEN, ACT 2617.

All magazine correspondence should be directed to the Publications Coordinator.

Trip reports & articles of interest are very welcome. Contributions may be edited.

**We gratefully acknowledge the support given to this magazine by our advertisers and
encourage our readers to support and patronise them whenever possible.**

SOUTHERN TABLELANDS FOUR WHEEL DRIVE CLUB INC.



Directory



President

Rosemary Orr
6241 0464 0414 568 358
Email: president@st4wdc.org

Vice President

Jim Raleigh
6281 3102 0413 612 305
Email: vpresident@st4wdc.org

Secretary

Catherine Panich
6281 5175 0412 866 375
Email: secretary@st4wdc.org

Treasurer

Rick Holland
6292 6537 0412 335 962
Email: treasurer@st4wdc.org

Past President,

Peter Fenwick
0406 379 913
Email: ppresident@st4wdc.org

Publications Coordinator

John Wiseman
6230 2459
Email: publications@st4wdc.org

Education Coordinator

Peter Reynolds
6251 1258 0428 623 458

Membership Secretary

David Whiteside
0414 714 965
Email: membership@st4wdc.org

Events and Trips Coordinator

Richard Brand
0418 568 358
Email: trips@st4wdc.org

Property Coordinator

John Kjar
6287 7574 0432 737 440
Email: property@st4wdc.org

Public Relations Coordinator

Mick Hines
0438 603 123
Email: public@st4wdc.org

General Members

Marj Jones
6284 3456
Email: marj@st4wdc.org
Vivian Henderson
0407 969 057
Email: vivian@st4wdc.org
Ian Goodacre
0403 304 505
Email: ian@st4wdc.org
Carl Cameron
6296 3351
Email: carl@st4wdc.org

General Meetings are held at the

Canberra Deakin Sports Club, Grose St, Deakin

at 7.30pm on the second Tuesday of each month.

General Meetings are a focal point of the club where members can meet and get information about past and future club activities. Meetings are structured with a minimum of formality. Meetings regularly feature talks from experts on topics of interest ranging from vehicle mechanics to bush lore. Reports on past trips are presented and new trips are announced. Visitors introduce themselves, there is a raffle with generous prizes and a coffee break for catching up with other members. Don't forget to wear your name badge.

Ideas for guest speakers are welcome. Contact Vivian Henderson if you know of someone who could make an interesting and topical presentation.

Many members gather before and after the meeting to enjoy a meal or drink at the club.

Publications

Website www.st4wdc.org. The site is used to provide timely information regarding Club activities and variations from previously announced plans. When visiting the site, always check the "What's New" page for recent announcements and current news. Especially, check for any last minute variations to trips you are undertaking.

Southern Trails is the ST4WD Club monthly Magazine.

Trip reports, and articles that are relevant to Club members are welcome, as are photographs and illustrations.

Closing date all material is the Friday following the monthly meeting.

Send contributions to publications@st4wdc.org

Talooge Park

Talooge is the Club's 600+ ha bush block in rugged country east of Bredbo. It is used for training and other club activities, and members are welcome there for private camping, recreation and the simple pleasure of enjoying the bush. Several areas have been set aside for basic bush camping. Some have firewood and long drop toilets, but no other services – no water, no electricity, no phone, very limited mobile phone coverage. Pets and the discharging of firearms are not permitted on the property. Visitors should assume that they are solely responsible for their own wellbeing and be conscious of the risks of fire, snakebite, etc. In an emergency, neighbours Mr Richie Southwell and his sons, can usually be contacted using UHF channel 18.

Many details are on the Club's website, and intending visitors should check there for current access details and other information. Committee members can advise regarding the combination locks securing the gates.

Code of Ethics

These are the rules of conduct that we should all observe when using our vehicles in the bush. We should all take them to heart. Image is a difficult thing to change!!

1. Obey the laws and regulations for Recreational Vehicles that apply to public lands.
2. Respect the cultural, heritage and environmental values of public/private land, by obeying restrictions that may apply.
3. Respect our flora and fauna. Stop and look, but never disturb.
4. Keep to formed vehicle tracks.
5. Keep the environment clean. Carry your own, and any other, rubbish, out.
6. Keep your vehicle mechanically sound and clean to reduce the environmental impact.
7. Adopt minimal impact camping and driving practices.
8. Seek permission before driving on private land. Do not disturb livestock or watering points, leave gates as found.
9. Take adequate water, food, fuel, basic spares and a first aid kit on trips. In remote areas travel with another vehicle and have Royal Flying Doctor Service, or equivalent, in radio contact.
10. Enjoy your recreation and respect the rights of others.
11. Plan ahead and lodge trip details with a responsible person.
12. Support four wheel driving as a responsible and legitimate family recreational activity. Consider joining an affiliated four wheel drive Club.

Training

The Southern Tablelands Four Wheel Drive Club is devoted to providing the best driver training possible. The Driver Training Team provides a range of courses throughout the year. Students are assigned an instructor over the period of the course. The 1:1 instructor/student ratio ensures maximum transfer of skills and experience.

The current courses are:

Mandatory Courses

Basic Driver Training,
Very Difficult Terrain, and
Advanced Recovery (for Grade 4 and 5)

Supplementary Courses

Water Crossing,
Sand Driving,
Mud and Snow,
Practical Map Reading,
Navigation,
Route Planning,
GPS, and
Other specific training relating to Club activities such as camper trailers etc may also be introduced..

Training for Driver Training Instructors

Trainee Instructor,

Assistant Instructor,
Instructor, and
Chief Instructor

Visit the ST4WDC web page for full details which are expanded on in detail in the Driver Training Policy document located under the Training menu tab.

Partners are encouraged to undertake the Basic Driver Education course, and any of the other courses offered from time to time. Unfortunately couples cannot undertake the course at the same time as only one driver per vehicle can be instructed during a training course. Training of a member's child is subject to approval by Club management and only when spare places are available. Couples may attend the Navigation, Map Reading & GPS courses.

Maps and travel publications

Members may purchase maps and travel publications through the Club at substantially discounted prices. For a comprehensive catalogue of electronic and paper maps, travel guides, and lots of associated publications, visit <http://www.hemamaps.com.au>. For further details, and to download an order form, visit "What's New" on the Club website.

Gone travelling!!! This facility is suspended temporarily due to travel!!

RO'S RAMBLINGS

Rosemary Orr



How time flies, seems like only the other day that I wrote the last lot of ramblings. But much has happened since then. So here goes -

We are now the proud owners of a tractor plus attachments. Our new tractor is a Massey Fergusson "35" and has a mower, a back blade, a scoop/bucket and harrows as attachments. It is red in colour and like every other Massey Fergusson tractor in Australia will be called "Fergie".

Fergie will be a huge asset to the club and will make weed control and other work at Talooge so much easier. She is at present undergoing a bit of a "make over" (very minor) but I am sure that once she has been renewed she will be raring to go.

As well, some major decisions have been made in relation to the further development of Talooge. It has been decided to put a large shelter on "Middle Thurbon Flat" to encourage more bush camping and to encourage campers to spread themselves away from the main administration area. Once the shelter has been built we are hoping to put in a simple camp kitchen and possibly a central wood heater of some description. We will also construct another fire pit for sitting outside and enjoying the stars. There are some great camping spots nearby the shelter with lovely views of the creek as well as other camping spots within a nice walking distance.

tance.

We are also hoping to construct a purpose built shed to enable us to lock up equipment and chemicals.

So there is lots to do – and how do we get it done – a weekend working bee on 13 and 14 September 2008, so put the date in your diary and we will see you all there. If you have any skills which you think would be useful let us know. Every little bit helps!

We must thank those who have been down to Talooge over the past weeks and done heaps. With the recent rain and all the work that has been done our property is looking just great. We have had a wonderful strike rate for all of the trees that have been planted and with the weed control work which has been done it is a picture. So go down and have a look. It is great for a day and even better for the weekend.

Our next big function is Christmas in July at Lauren Hill. Get ready for some great food and lots of fun. Interesting trip there – interesting trip home – lots of laughter and games. Even better than the games at your initial driver training. Now that's saying something!



BACKTRAX X-TERRAIN



Auspit
The little Aussie legend

Simply
So Good

Tvan Camper Trailer of the millenium



Independent Trailers Ph 0412 866 375

Taking that trip of a lifetime or just a weekend away and don't want to camp! Why not hire a Tvan? Fully insured, fully equipped, and includes unlimited training in its setup and use. Come and see for yourself. We are in Chifley.

Catherine and Peter at info@independenttrailers.com.au www.independenttrailers.com.au

SPECIAL GENERAL MEETING

8th July, 2008



The Southern Tablelands Four wheel Drive Club will conduct a Special General Meeting on Tuesday 8 July 2008, commencing at 7.30 pm at the Deakin Football Club. The sole purpose of the meeting is to discuss and, if considered appropriate, approve changes to the Constitution of the Club relating to the definition of what constitutes a "Family Member". The impact of the changes is to clarify which members of a 'family' are entitled to the benefits of membership. These changes have been previously agreed by the Committee.

The normal monthly meeting will follow the completion of this Special General meeting.

The proposed changes relate to Rule 6(4) of the Constitution and if approved would read

Family Member

Family membership is extended to those persons who are the spouse, partner or dependent under the age of 21 years of an owner-member and are domiciled under the same roof.

Any family member meeting the requirements of rule 6(2) shall have the full privileges of a member as specified in rule 6(2). The spouse, including any person in a recognised domestic relationship, of an owner-member has all the privileges of an owner-member provided he or she is of sufficient age to obtain a licence to drive in Australia.

Moved by Jim Raleigh, seconded by John Kjar.

The change will be effective if it is passed by at least $\frac{3}{4}$ of the votes of those members of the Club who, being entitled to vote, vote in person. There are no provisions for proxy votes. Owner Members and Life Members are entitled to vote on this motion.

Please note the existing Constitution and By-laws can be downloaded from the Club's webpage.

RO'S Ramblings

Continued

It was great to see some families camping at Talooge over the long weekend. Not too cold I was told, and lots of space for the kids to ride bikes and lots of peace and quite.

Our next big function is Christmas in July at Lauren Hill. Get ready for some great food and lots of fun. Interesting trip there – interesting trip home – lots of laughter and games. Even better than the games at your initial driver training. Now that's saying something!

Another important aspect of our Club is our archives and other material. We would love someone who has some librarian experience to "lick it into shape" and get it into a form

Dogs In National Parks

I have spoken to the National Parks office at Queanbeyan and here are the rules in relation to dogs and National Parks.

1. A dog (or other animal) cannot be transited through a National Park unless that is the only way for the vehicle to get from point A to point B;
2. If there is no alternative and the vehicle is travelling through a National Park it cannot stop with the animal on board.
3. The exception is the Alpine way which is a main thoroughfare through the national park and vehicles are allowed to stop but the animal MUST remain in the vehicle.

I hope this clarifies the position for everyone.

TALOOGE TOPICS

John Kjar



Suggested Master Plan for facilities at Talooge – 28 May 2008.

(a) Administration/DTU Area

1. Minimise camping in this area – except on driver training weekends
2. Construct a shed for the proposed purchase of a tractor – site to be det.
3. Construct a shed or shelter for the Fire truck – where now parked.
4. Construct a Chemicals shed – between existing sheds and upper water tank
5. Construct a new shed for Lurch – possibly next to Fire Truck?
6. Convert Lurch shed to second Driver Trainers shed
7. Pave floor of the two DT sheds, & install a wood stove in (Lurch) shed.
8. Construct pergola with clear sheeting next to DTU shed
9. Line western wall (tilt door) end of kitchen in DTU shed
10. Ensure rain-water runoff does not enter the DT sheds

(b) Camping Areas – general

1. Committee requested me to talk with the persons who made submissions to the Club on Talooge planning, and make recommendations to this meeting.
2. There seems to be general agreement amongst Club members to make Thurbon Flat the preferred camping area
 - . have a range of camping facilities summer /winter, minimal/substantial
 - . have similar facilities to those at the Admin/DTU area in major camping areas, and minor camping areas to have only basic facilities
 - . major camp area facilities to include access to toilets & showers, large shelter (with a good aspect/outlook), fire-pit, water, some electricity, shade
- . minor camping areas to have a fire place and reasonable access to toilets
- . other important factors include safety (trees, river), protection of the environment, size of facilities, costs, timing etc.
- . develop Upper Thurbon Flat as the first priori-

ty, then Lower Thurbon Flat, minor camp areas and Hole-in-the-Wall campgrounds.

3. During discussion with the planners, we all changed our ideas significantly but have now agreed unanimously on the way forward. However, these do differ slightly from those agreed at Meet-the Committee weekend in some areas.
4. Thurbon Flat is an ideal area with potential to accommodate 60 vehicles and campsites in 2 major areas and 3 minor areas – see map – Upper Thurbon Flat can accommodate say 15 sites, lower Thurbon Flat at least 30 sites, Strike-a-Light Ck about 6 sites, Calabash Ck about 6 sites, Home Paddock about 6-8.

© Upper Thurbon Flat

1. Use the existing two toilets, add 44-gallon drums for washing hands
2. Construct a shelter (wider than existing shelter in Admin area) near toilets. Easily accessible to campsites, great view of river, no overhanging limbs
3. Relocate the firepit – construct firepit same size as in Admin area
4. Include a water tank to enable bush showers
5. Install a shower enclosure – in the large depression?
6. Provide minor electricity supply – for lighting near shelter/toilets
7. No 1 priority for 2008

TALOOGIE TOPICS

John Kjar



(d) Lower Thurbon Flat

1. co-locate the two ATCO sheds (each with 2 toilets and 2 showers) above a small tree in the middle area – protects the River, won't get swamped, use shower water for watering trees – work is partially completed
2. Construct a large shelter at the end of the Flat near the River bend. Easily accessible to campsites, toilets, great view of river/rocks, no overhanging limbs
3. construct firepit same size as in Admin/DTU area
4. Include a water tank for showers etc
5. Have some shower facilities in the ATCO sheds – yet to be determined

Provide a minor electricity supply – for lighting near shelter/toilets

(e) Minor camp areas

Three minor camp areas would have a fireplace, be easily accessible from a car with a personal gate through the existing wire fences (so not able to drive up to the campsite), be secluded, quiet, but have good access to the toilets.

(f) Hole in the Wall

Suggest we consider installing some pit toilets and firepit here and consider constructing a shelter.

(g) Offset Mounds/hill starts area

Currently has two pit toilets. Depending on use and users, may consider a shelter.

Report on the Working Bees for Taloo facilities on 24-25 May

The Committee approved a working bee for 24 May at Queanbeyan to load a large shelter onto a truck for delivery to Taloo. This task was successfully completed by Peter Butterfield with help from Graeme Kruse, Paul Cordwell, Bob Allen and Greg Divall.

The Committee also approved a working bee for 25 May at Taloo Park. This was attended by Richard Brand, Mick & Jayne Hines, David Whiteside, Don Wiltshire, Ian Brown, Ian Ffrench, Ethan Eastman, Robert Knight (plus Jason) with his excavator and truck, Roger Leech (tilt truck) and John Kjar. Work completed that day included

Improved the crossing over Strike-a-Light at the end of Horse Paddock, and graded slope up the hill on our side. A large overhanging branch at the creek crossing had been removed in early May, together with some widening of Rayners Fire Trail to enable access. Further widening was required on 25 May to enable the ATCO sheds to be transported along Rayners Fire Trail.

Moved the two ATCO toilet/shower sheds to Lower Thurbon Flat and

- . dug pits for the toilets
- . dug trenches for the shower waste, installed pipes and partially refilled the trenches.

Unloaded the large shelter (loaded on the previous day in Queanbeyan) on Lower Thurbon Flat.

Removed rocks and soil from the uphill (north) side of the DTU shed, so that there is now a three metre wide apron in front of the shed that slopes away from the shed and water will not run into the shed.

Cleared timber from site for proposed Chemicals shed (between existing sheds and upper water tank)

Cleared timber from bush camp sites next to Strike-a-Light Creek on the east side of Thurbon Flat

Keeping us on Track

Richard Brand



Pets and trips

At the extraordinary committee meeting held at Talooge Park, an extraordinary event occurred. Most of us were standing at the site of the new shelter for Central Thurbon Flat when we noticed a big black pig wandering nonchalantly down from the driver training shed. Peter Reynolds was inspecting the little house from the inside at the time, so we all started to yell out "pig". To our astonishment, neither of them took any notice. The pig looked as if he owned the place, which for much of the time he probably does. I think we were a bit worried that the pig would become aggressive with the intruder in his territory.

I used to take my dogs to Talooge Park when I knew there would not be many people there. If my German shepherd Shay had been with us and had spotted the pig first, he would probably have given chase and could have come off very second best. It is the same story with kangaroos which can be very dangerous when cornered. The problem with city dogs like Shay is that they do not know how to behave in the country.

The perfect example is a couple of weeks after the bushfire at Talooge Park. I was walking with the dogs through the burnt out area. The dogs were ahead of me when suddenly a burnt stick between us moved. It was a two meter black snake. I called the dogs and they raced back, straight over the snake.

There are unseen dangers for pets too. One of the few camping areas that welcomes dogs-under-control is Mystery Bay near Narooma. Many years ago I stayed there with a couple of show German shepherd dogs, on my way to a Christmas holiday in Melbourne. As soon as we got to Melbourne, one of the shepherds started to get wobbly and ended up in the University Animal Hospital in Werribee. She was there for ten days being tested for this and that, getting weaker and weaker, until finally a team of five vets combed through and discovered a tick – about the only possibility left. Needless to say the bill was in four figures and the holiday was not too relaxing.

Dogs are not too fussy about what they eat, either. We recently had one that decided to fill up on grass – nearly a kilogram in a sitting. Many incremental treatments later, the vet bills could just about have paid for a new short motor.

In the country, many areas are baited and the danger is not just that dogs will take the bait directly. Baited animals may move well outside the baited area before dying, and any remains are also poisonous. Farmers have businesses to protect, and dogs chasing livestock are likely to get lead poisoning – from little round pellets.



Planning a trip?

The following experienced trip leaders have offered to assist new trip leaders in planning their trips.

Budding trip leaders are encouraged to seek their advice.

Name	Phone	Mobile	Email
Peter Watson	6254 7118	0418 649 823	pwatson1@tpg.com.au
Neville Simpson	6295 9021		bl.ng@bigpond.net.au
Dennis Collins	6292 7423	0418 969 452	margden1@actewagl.net.au
Chris Nicholls			calypsol@gmail.com
Doreen & Plod McEncroe	6241 8188	0429 008 436	doreen.mcenroe@act.gov.au
Neil Telfer	62919683	0427 263 805	ntelfer@tpg.com.au
David Whight		0438 882 696	tdavidwhight@hotmail.com

Publisher

Michael Patrick



This is my second attempt at publishing this magazine so please bear with me at a poor attempt. This edition of the Magazine is late because I was very short of material to publish and encountered computer problems which caused me to have a complete rebuild.

This magazine is created to supply club members with current information on what is happening, details on trips reports and items of interest.

Currently there are no trips reports available and no input of any general material from club members. (Except what has been published in this edition). We desperately require member participation in the production of the club magazine.

Some of the information I would like to see are:

- ◆ Different methods of cooking
- ◆ Quick write up of truck setups
- ◆ Different Tent setups
- ◆ Setups for communications
- ◆ GPS setups
- ◆ Unique ideas (Some are in this publication)
- ◆ Ways to keep warm
- ◆ Camera techniques

There are lots of items of interest we can publish in this magazine but we do require your input. You don't have to supply much. Just a couple of lines and a photo will do.

Pets and Trips (continued)

Having said all that, pets may be allowed on some trips at the trip leader's discretion. Before asking, please consider how well your pet is socialized, especially with other pets and with small children. Will you be staying in a public camping area and how will other groups react if your pet starts barking or mewling and pinching their food?

Mewing? Yes, many years ago a Burmese cat was a fixture on many trips. He used to spend most of the time perched on his owner's shoulder, as Burmese tend to!

So fellow members please help the desperate publishers with some material.

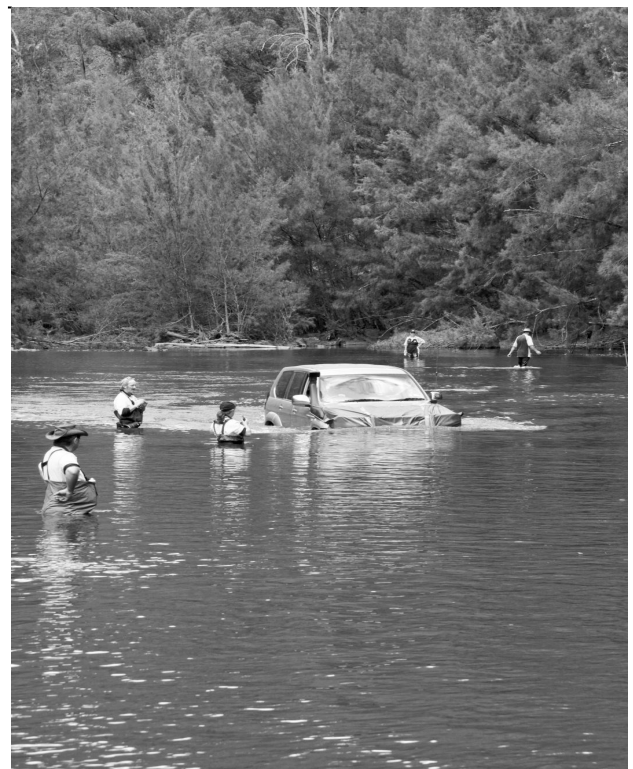
On the weekend myself, Peter Reynolds, Sam, Rob and Warren gave assistance to the Snowy Mountain Challenge. Our role was to bus spectators from one viewing point to another. The reason for this was that the location was 4WD only.

Well boy did we drive. We were continually moving approx 150 spectators around every day. Interesting point to note that the amount of people that bought out their littlies, who had a ball.

We as drivers did not get much of a chance to see a great amount of the events, but the ones we did were impressive. I do recommend that the next time this event run please go and watch. It is quite enjoyable.

Well fellow members I hope we will get some assistance from every body in publishing this magazine.

(My contribution will be the story of my mounting process of a laptop with a 2nd screen into my truck)





Christmas in July

*12th - 13th July
Laurel Hill Forest Lodge
Tumbarumba*

*Join us for a fun - filled weekend.
A leisurely drive through our beautiful countryside,
Enjoying a lunchbreak in a scenic spot
And arrive just in time for a delectable Afternoon Tea.
Time to choose and settle in to your accommodation then
participate in some fun activity until Happy Hour and preparation
for a mouth - watering Three Course Dinner.
To complete the evening, join everyone in some great activities.*

*The next day, after an appetising breakfast, there will be two
options to return home, either quickly, or at a more meandering
pace.*

*What you need to bring
A great attitude and sense of humour
"Santa's Helper" theme clothing for Saturday Dinner,
Morning Tea /Lunch for Saturday & Sunday (if you can fit it in)*

*Please contact Marj Jones on 62843456 /0427284236
and book your place*

Cost will be \$65 - \$70 a head.

ABOUT TRIPS

TRIP GRADING

For trips in the club's calendar a grading system of levels 1 to 5 is used to assist members in deciding which trips they would most enjoy and which grade suits the driver's level of skill and experience. This system of grading is a guide only. The grade assigned to a trip may change due to weather conditions, and the trip leader should be consulted in such circumstances. The trip leader has the right to deny a request from a driver who is considered not to have the necessary level of skill in 4Wdriving, or whose vehicle is deemed inadequate.

- *GRADE 1:** very easy with little, if any 4wdriving involved; will usually consist of a scenic tour or a trip to camp. No 4WD skills are needed.
- *GRADE 2:** a relatively moderate 4WD trip with winching and/or towing unlikely. Moderate level of 4WD skills needed, as well as completion of Basic Driver Education Course.
- *GRADE 3:** a medium 4WD trip which requires cautious driving; winching should not be required. Good level of 4WD skills needed, as well as completion of Basic Driver Education Course.
- *GRADE 4:** a moderately difficult 4WD trip with some winching and/or towing almost a certainty. High level of 4WD skills needed, as well as completion of both the Basic and Advanced Driver Education Courses.
- *GRADE 5:** an extremely difficult 4WD trip. Participants must be experienced at traveling over difficult terrain. Winching and/or towing will definitely be required and participants must have all their own recovery equipment. Skill levels the same as Grade 4.

DRIVER EXPERIENCE

Conditions on some trips at Grade 3 and above may prove too difficult for inexperienced drivers. Please advise the trip leader of the level of skill, and vehicle equipment when signing up for such a trip. Members must have attended the 'Safe-One' Basic Vehicle Operation Course before driving on a Club trip above the Grade 1 level, unless they have satisfied the Club's Education Coordinator that they have the necessary experience.

TRIP PLANNING

If you are planning a Trip or Social Event for the Club contact the Club Trips Co-ordinator, preferably at least two months in advance of your chosen dates. This will allow time to give your event a 'good plug' in the Southern Trails, and it helps to avoid clashes with other people's plans. However, if a good event opportunity comes up at short notice our rules are sufficiently flexible to enable a quick approval. Club policy requires that a Club event shall be publicised in the Club magazine, or at a General Meeting of the Club, or on the Club's website in order for it to be considered a formal Club event and so be covered for the purposes of insurance, subsidies and so forth.

For a trip using tracks that are not public roads it is Club policy to confirm with the appropriate authorities that access is permitted on the chosen dates. This includes National Parks, State Forests as well as private property.

CB RADIOS

The Club strongly recommends that a UHF radio be carried to facilitate convoy procedures. UHF channel 14 is used as the standard channel for trips.

FIREARMS & PETS

Firearms are not permitted on club trips. Pets are not allowed in National Parks, otherwise refer to Trip leader.

TRIPS AND EVENTS



8 Jul **Monthly Club Meeting**

(2008-010)

Start: 7:30 PM
Description: Deakin Sports and Social Club

12 - 13 Jul **Christmas in July**

(2008-018)

Trip Leader: Marj Jones
Phone: 6284 3456
Vehicles: unlimited
Grade: 1
Start: 8:15 AM
Departure: Uriarra Homestead
Fuel: Full tank
Requirements: Well maintained vehicle, good tyres, water for the day, morning tea plus lunch for both days, and bring happy hour nibbles and drinks for the evening
Bring your own bedding for the supplied bunks
Description: A four-year old 'tradition' in the making! Great drives there and back, in 'easier' and 'harder' convoys. We stay overnight in bunkhouses in a converted low-security gaol "Laurel Hill Forest Lodge" set in picturesque alpine grounds - see <http://www.laurelhillforestlodge.com.au/index.htm>. Our hosts provide warm scones and cream on arrival, a great 3-course Christmas dinner and a memorable breakfast to set us up for the trip home. Unspeakable games have been played into the early hours. A great social weekend with a choice of easy or harder drives there and back
Comments: Costs \$65 per person which is unbelievably cheap for accommodation, tea, dinner and breakfast. Please book as soon as possible so numbers can be locked down at the gaol!

25 - 27 Jul **Canooli**

(2008-060)

Trip Leader: Val Brusensky
Phone: 6231 9878 (h); 0428 880 233 (m)
Vehicles: 6
Grade: 3
Start: 6:30 PM
Departure: Corner Captain's Flat Road and Kings Highway outside Queanbeyan
Fuel: Full tank, maybe extra for petrols
Requirements: Basic driver training, basic recovery gear, UHF radio, good tyres, well maintained and reliable vehicle,

TRIPS AND EVENTS



camping gear including gas stove for cooking (in case of fire ban), food and water, happy hour supplies.

Description: To make the most of the weekend, this trip will feature a night drive getting to Canooli. Easy driving to Hoskinstown then the Big Badja Fire Trail.

12 Aug Monthly Club Meeting

(2008-011)

Start: 7:30 PM

Description: Deakin Sports and Social Club

13 Aug My Fair Lady

(2008-053)

Trip Leader: Catherine Panich

Email: capan@homemail.com.au

Phone: 6281 5175 (h); 0412 866 375 (m)

Vehicles: 10

Grade: 1

Start: 7:30 PM

Departure: The Canberra Theatre

Description: Musical with all the ingredients of a 'luvverly night in the theatre. Starring: Reg Livermore, Taryn Fiebig and Nancye Hayes.

Comments: Cost is \$90.50 per person, only 10 places are available. Booking and payment are essential by 1st July

16 Aug 4 Wheel Drive NSW & ACT

(2008-055)

Trip Leader: Peter Fenwick

Email: pfenwick@homemail.com.au

Start: 9:00 AM

Departure: Port Macquarie

Description: Quarterly meeting of the Association. See Association website for more details: <http://www.4wdnsw-act.asn.au/>

TRIPS AND EVENTS



Description: To make the most of the weekend, this trip will feature a night drive getting to Canool. Easy driving to

16 - 17 Aug Bendethera Caves

(2008-061)

Note: Moved a week earlier and regraded

Trip Leader: Michael Patrick

Email: Michael.patrick2@bigpond.com

Phone: 0412 377 942 (m)

Vehicles: 8

Grade: 3

Start: 8:30 AM

Departure: McDonalds Car Park Queanbeyan

Fuel: Full tank

Maps: Southern NSW

Requirements: Basic driver training, basic recovery gear, UHF radio, food and drink

Description: This will be a cold trip so rug up warm and bring a good sleeping bag. Bendethera valley is great in winter, crisp and dry. The plan is to venture via the Mericumbene Fire trail and depart on Sunday via the Dampier fire trail. A great winter trip

24 Aug Wine Ramble with Ro

(2008-069)

Note: New since June magazine

Trip Leader: Rosemary Orr

Email: president@st4wdc.org

Phone: 6241 0464; 0414 568 358 (m)

Vehicles: 10

Grade: 1

Start: 9:00 AM

Departure: Car park Dinosaur Museum, Barton Highway

Fuel: Full tank

Maps: Canberra wine map

Requirements: Basic Driver Training, basic recovery gear, UHF CB. Well maintained and reliable vehicle, good tyres, good sense of humour, lunch

Description: We will concentrate on the Murrumbateman wineries. Plan to have a basket lunch at Long Rail Gully winery the other side of Murrumbateman. If the weather is not the best, could do lunch at Murrumbateman pub instead. Favourite wineries include Brindabella Hills, Jeir Creek and Pankhurst. Some new ones to try might be Gallagher and Greystones. Too many to choose from.

Comments: This trip will evolve – but be prepared for a great day with lots of fun and some good wine.

TRIPS AND EVENTS



9 Sep **Monthly Club Meeting**

(2008-012)

Start: 7:30 PM
Description: Deakin Sports and Social Club

13 - 14 Sep **Talooge Park Working Bee**

(2008-066)

Note: New since June magazine

Trip Leader: John Kjar
Email: kjar@optusnet.com.au
Phone: 6287 7574 (h)

Vehicles: Unlimited

Grade: 1

Start: 8:00 AM

Departure: Williamsdale

Requirements: BYO lunches, Sunday breakfast, snacks and happy hour supplies. Make your own way to Talooge Park on Friday or join the Saturday convoy. Stay for the Saturday night if you can, or just come down for a day.

Description: The weather will be warming up so we are planning a major working bee at Talooge Park, supported by some heavy earth-moving machinery courtesy of Robert Knight, and probably our own tractor. The major objectives are: assembling the 14 x 14m Queanbeyan school shelter on a site overlooking the river bank on Central Thurbon flat; and skidding the two ATCO shower / toilet blocks into final position on Lower Thurbon Flat, ready to host the Bush Skills Weekend. Of course, we will need a new firepit on Thurbon Flat as well! A lot of finishing work will be ready to start: fitting out the ATCO blocks; replacing the garage door in the kitchen with bay windows; paving and lining one of the single garages; and paving a pergola area outside the driver training facility. We would also like to initiate conservation measures for the fireplace ruins on Thurbon Flat and the old harvester on Raynor's Firetrail. Earthworks will include levelling a site for a new shed to house all our major equipment (firetruck, tractor, trailers, etc) and a chemical storage lock-up; plus work on Duck's Crossing and access roads.

Comments: Please email John early to offer your services, tools you can bring, and your areas of special interest - eg painting, catering, concreting, roofing, fencing, paving, plumbing, etc

20 - 21 Sep **Bush Skills Weekend at Talooge**

(2008-028)

Note: Help wanted!

Trip Leader: Richard Brand
Email: trips@st4wdc.org
Phone: 0418 568 358 (m)

Vehicles: Unlimited

Grade: 1

Start: 8:30 AM

Departure: Williamsdale

TRIPS AND EVENTS



Departure: Williamsdale
Fuel: Full tank
Description: Our Club members have an amazing range of skills they can impart! These range from bush welding using two car batteries, through damper cooking using camp ovens, to extracting survival water from vegetation, plus fixing tyres and navigating with and without GPS and lots more. We need attendees and especially contributors.
Comments: Offers of assistance are more than welcome, as are suggestions for topics

4 - 6 Oct Labour Day long weekend

Any ideas. Come on lets have something for this log weekend ??????

4 - 6 Oct Willow Glen 4x4 Challenge (2008-029)

Trip Leader: Peter Reynolds
Phone: 6251 1258 (h); 0428 623 458 (m)
Vehicles: 6: 4 competitors, 1 reserve, 1 team leader. Unlimited supporters
Grade: 2
Start: 8:15 AM
Fuel: Full tank
Requirements: Good truck, excellent tyres, twin lockers and suspension lift an advantage
Description: This is the best inter-Club competition weekend in the calendar. What's more, Southern Tablelands has won outright for the last three years! Anybody can enter and have a real ball. Drive to your limit. It is not a time trial style competition. All spectators are welcome, plenty of camping space for everyone. More details in due course. We need your support

14 Oct Monthly Club Meeting (2008-013)

Start: 7:30 PM
Description: Deakin Sports and Social Club

18 - 19 Oct "Safe One" Basic Driver Training at Talooge Park (2008-024)

Note: Date changed from 30th - 31st August
Trip Leader: Peter Reynolds
Phone: 6251 1258 (h); 0428 623 458 (m)
Start: 8:00 AM
Departure: Bredbo Service Station
Description: This is the Club's official and accredited basic driver education course

TRIPS AND EVENTS



26 Oct **"Safe One" Basic Driver Training Course Follow-up Day** (2008-025)

Note: Date changed from 6th September

Description: This is day three of the basic driver education course on the 30th and 31st August and MUST be attended before participating on any Club trips where the proposed route is expected to be at Grade 2 or above

1 - 2 Nov **Bendethera Spring Overnighter** (2008-058)

Trip Leader: Greg and Vickie Taylor

Email: vickie.taylor@bigpond.com.au

Phone: 6241 3547 (h)

Vehicles: 8

Grade: 3

Start: 9:00 AM

Departure: Braidwood – side of service station past the pie shop

Fuel: Full tank (Fuel at Bungendore and Braidwood)

Maps: South Coast Forest Map (1:150 000) and 1:25 000 maps of Araluen, Snowball, Bendethra, Michalego, Colinton, Tinderry, Jerangle, Whinstone, Burrumbela

Requirements: Basic driver training, basic recovery gear, UHF radio, good tyres, well maintained and reliable vehicle, camping gear including gas stove for cooking (in case of fire ban), food and water, happy hour supplies.

A blind/tarp may be necessary for water crossing. Apple turnover from the pie shop. Don't forget your binoculars and camera. Kids and teenagers are encouraged!!

Description: Morning tea as we assemble at Braidwood. We plan to travel via Araluen and cross the Deua River at Dry Creek. A tarp or blind may be necessary depending on the depth of the river (this is usually low but can rise with recent rain). We will then head up the Mericumbene Fire Trail to Bendethera Mountain, collect firewood, lunch and descend to the valley and camp. Chance to swim or laze around before happy hour on Saturday night with a chance to see who has the better story. Slow pack up Sunday with mid to late morning departure through Dampier Fire Trail, Minuma Fire Trail then Middle Mountain Road and Krawarree Rd. There is an old Homestead and the Bendethera Caves to explore (three hours or more walk for the caves and torch, water required). There is a large camp ground in the valley with pit toilets

4 Nov **Family and Community Day**

TRIPS AND EVENTS



8 - 9 Nov

Water Crossing and Sand Driving Course

(2008-030)

Note: Date changed from 25th - 26th October
Trip Leader: Peter Reynolds
Phone: 6251 1258 (h); 0428 623 458 (m)
Description: This is the Club's official water crossing and sand driving course. For more information contact Peter Reynolds

8 - 9 Nov

Waratah Flat

(2008-057)

Trip Leader: Dennis & Margaret Collins
Email: margden1@actewagl.net.au
Phone: 6292 7423 (h)
Vehicles: 6
Grade: 3
Start: 8:00 AM
Departure: Williamsdale opposite Petrol station
Fuel: Full tank at start, fuel avail at Bombala, Cooma or Delegate.
Maps: 1:50000 Delegate and Goonerah-Ellery
Requirements: Basic Driver Training, basic recovery gear, UHF radio and good tyres, well maintained vehicle, drinking water and communal happy hour nibbles.

Description: Waratah Flat is located in the Snowy River National Park and this is a follow up trip as the area is surrounded by Gipsland Waratahs should be in full flower. We will take the black top through to Delegate then explore some of the tracks in the area before arriving at the Waratah Flat camp ground which is the limiting factor as it a small camp site. We will return to Canberra on the Sunday following much the same route

11 Nov

Monthly Club Meeting

(2008-014)

Start: 7:30 PM
Description: Deakin Sports and Social Club

TRIPS AND EVENTS



29 Nov Driver Trainer's Christmas Party

(2008-067)

Trip Leader: Peter Reynolds
Email: debpete1@bigpond.com
Phone: 6251 1258 (h); 0428 623 458 (m)

29 - 30 Nov Blue Waterholes

(2008-062)

Trip Leader: Michael Patrick
Email: Michael.patrick2@bigpond.com
Phone: 0412 377 942 (m)
Vehicles: 8
Grade: 2
Start: 8:30 AM
Departure: Point Hut Crossing Car Park
Fuel: Full tank
Maps: Southern NSW
Requirements: Basic driver training, basic recovery gear, UHF radio, Aeroguard (horse flies are big) food and drink
Description: Blue Waterholes is located in the Kosciuszko National Park and has excellent camping facilities. The plan is to depart Point Hut crossing and head to the southern side of Namadgi National Park. Whilst passing through this area we will check out Bobyan hut. We will then transit through Yaouk valley to Adaminby. From there we will head up the Snowy Mountain Highway and turn onto Long Plain track. This area has lots of old homesteads so we will view these on the way to Blue Waterholes. There is a lot to see from Blue Waterholes and the caves that are abundant in this area. We will depart Sunday after lunch and proceed via Long Plains and Broken Cart back to Canberra. This is a very easy trip and off road camper trailers are welcome.

TRIPS AND EVENTS



6 - 7 Dec **Christmas Party at Talooge**

(2008-031)

Trip Leader: Richard Brand
Email: trips@st4wdc.org
Phone: 0418 568 358 (m)
Vehicles: Unlimited
Grade: 1
Start: 8:30 AM
Departure: Williamsdale
Fuel: Full tank
Requirements: UHF radio, happy hour provisions, pot luck main course, lunches and breakfast. Also a secret wrapped present for each child you are bringing, plus an inventive wrapped grown-up present valued under \$15. Table decorations
Description: Two packed days of fun for children and adults alike. Kids games will be followed by games for kids-at-heart. Santa will visit, there will be the Gift Grab, kid's movies then the communal dinner following happy hour. Best table decoration, club-provided desserts and camp-fire camaraderie take us through to the "Morning-after Funkana". Bigger and better than ever, this will test your driving skills, patience, trust and communication abilities as never before. Not to be missed.

9 Dec **Monthly Club Meeting**

(2008-015)

Start: 7:30 PM
Description: Deakin Sports and Social Club

LEE & THOMAS **Auto Electrics** EST.1960

- General Auto Electrical Repairs
- Batteries & Accessories
- Airconditioning Servicing
- Exchange Alternators & Starter Motors

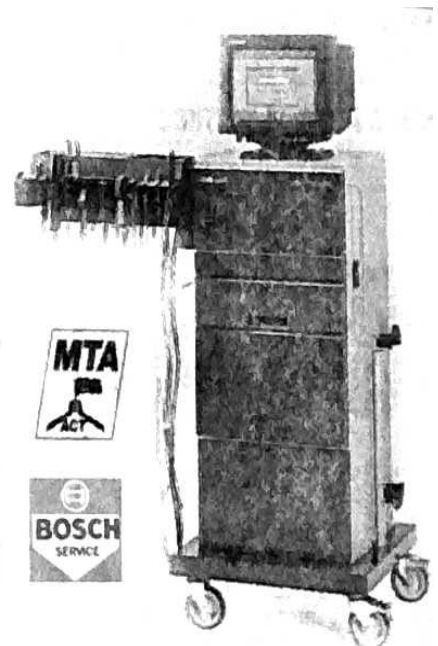


• Car Immobilisers

SHOWROOM & WORKSHOP
@ 95 Grenville Crt
Phillip

OPEN MON - FRI
8.00am - 5.00pm
SATURDAY
8.00am - 12.00

6281 1455



flickr

Mick Hines



flickr is a photo-sharing website where account holders can upload and share their photos with the world. The best part is, basic flickr accounts are free !

The site currently has over 2 billion images and over 20 million users worldwide.

Account holders can **tag** their photos with keywords for easier searching, place their photos in **sets** and **collections** for easier photo management, add **comments** and **tags** to other users photos, link their photos to maps and join other like-minded photographers in **groups**.

The flickr site is pretty easy to navigate around and setting up an account is a breeze. Follow the prompts from the log-in screen, which helps you right through the account set-up process.

You don't need to have an account for viewing or searching for photos, but most of the worthwhile features are restricted to account holders. The site has plenty of self-paced interactive tutorials and information to help you learn how to navigate around and use its features.

Basic accounts are limited to 200 photos, with restrictions on the amount of bandwidth you can use and the number of sets you can create to organise your photos.

Pro accounts, which cost around US\$24.95 a year, remove those restrictions and allow you to upload unlimited photos and create literally unlimited sets and collections.

flickr groups usually have a pool of photos where users can view, tag, annotate and comment on other group members photos. Groups also have a discussion area where you can create or participate in discussion threads on any subject under the sun. Some groups are a real free for all, while others require the group owner's permission to join the group, upload photos to it and participate in discussions. Groups can be setup as either public or private.

Groups and privacy controls allow members to restrict access to their photos and to set copyright restrictions on any other use of their photos.

Log onto the site at <http://www.flickr.com> and search for ST4WDC in the photo tags area. You might be surprised at some of the content that's there.

Several club members already have accounts on flickr (see below) and there is already a Southern Tablelands 4 Wheel Drive Club group set up and running there. The group has been set up as private and has been restricted to ST4WDC members.

Search for ST4WDC in **flickr groups** and you'll be taken to a screen where you can ask to join the group. Send a short email to the moderator asking permission to join the group. Don't forget to include your real name and that you're a member of the club.

Hopefully see you online on flickr soon!

Chris Nicholls - <http://www.flickr.com/photos/33116385@N00/>

Mick Hines - <http://www.flickr.com/photos/mhines/sets>

John Wiseman - <http://www.flickr.com/people/69781649@N00>

An Australian was in Ireland. On his way to Belfast, he stopped at a bar and asked one of the locals, "What's the quickest way to Belfast?" The Irishmen asked, "Are you walking or driving?" The Australian replied, "I'm driving!" The Irishman said, "Aye, that'd be the quickest way!"

4WD ASSOCIATION BULLETIN



The last Quarterly Association meeting at Capertee on the 17 May, 2008 was one of our most interesting in my opinion. Delegates heard and saw the marketing initiatives now in place and or underway and there was a lively discussion about relationships and communication with NPWS. I hope your delegates give you a thorough run down on the marketing initiatives foremost amongst these being:

- The new display trailer that is for use by the Association and every affiliated Club in the Association. It comes with lifting sides, display board facilities, flat screen TV, DVD, Inverter, marquee, laptop computer, BBQ. A register will be kept and all we ask is that one Club Member only be solely responsible for the trailer while it is in your Club's care. Contact Chris Tierney at marketing@4wdnsw-act.asn.au

- The two new TV ads the first had already gone to air and has another 2 weeks to run, the second is about to happen. See them on Four Wheel Drive TV, TVS (analogue) Channel 31 at 7.30pm Thursdays (also Saturdays 11.30am and Sundays 3.30pm). I mention again, we need video footage of 4WD Club activities e.g. trip activities, family involvement, volunteering work etc.

In my last Bulletin, I expressed concern about the lack of trip feedback to Forests, NSW and NPWS specifically the lack of Forests Survey Forms and reports to Jacqui Kelly as Land Manager. At the General Meeting Delegates heard my pleas for cooperation which drew out an equally concerned response from a number of Delegates voicing fears that if they disclose their favourite tracks, that NPWS will simply close them down or put a bulldozer through them for the general public to follow. They advised that Club Members were very cynical about the motives of NPWS. There followed a spirited discussion.

I advised Delegated that it is my belief that we have to move on from the "bad old days". I advised that I can detect no indication at all that NPWS or Forests, NSW have any intention of using information we provide to pursue some hidden agenda. I advised Delegates that I would speak of your concerns to Bob Conroy, Director, NPWS. I have done this and his response was; "we have no hidden agenda. We (e.g. Regional Managers) would welcome constructive information from Clubs about conditions in the Parks. They would see this as very helpful management information. Information such as this would help build relationships, not lead to closures. I will put my opinion in writing and you can quote me"

I should get Bob's letter next week.

As for Forests, NSW I know their attitude is positive and they welcome as an aid to management information about conditions in State Forests.

On this issue, the ball is with us! I believe we need to move forward and build on the relationships which have been established with NPWS and with Forests (and hopefully soon with Dept Lands). I believe access will be less of an issue if we take positive steps with Land Managers. **If we sit back and try to hide or protect what we have, I believe we are in greater risk of losing and eventually going backwards. Remember the Land Use reports go to Jacqui Kelly for use in rebutting or dealing with Plans of Management.** Delegates in the end voted in favour of increasing disclosure on a basis that Clubs should declare their visits to NPWS and to Forests, NSW but reserve the right to hold back disclosure of some that they feel are vulnerable.

4WD ASSOCIATION BULLETIN



I will do a couple of things:

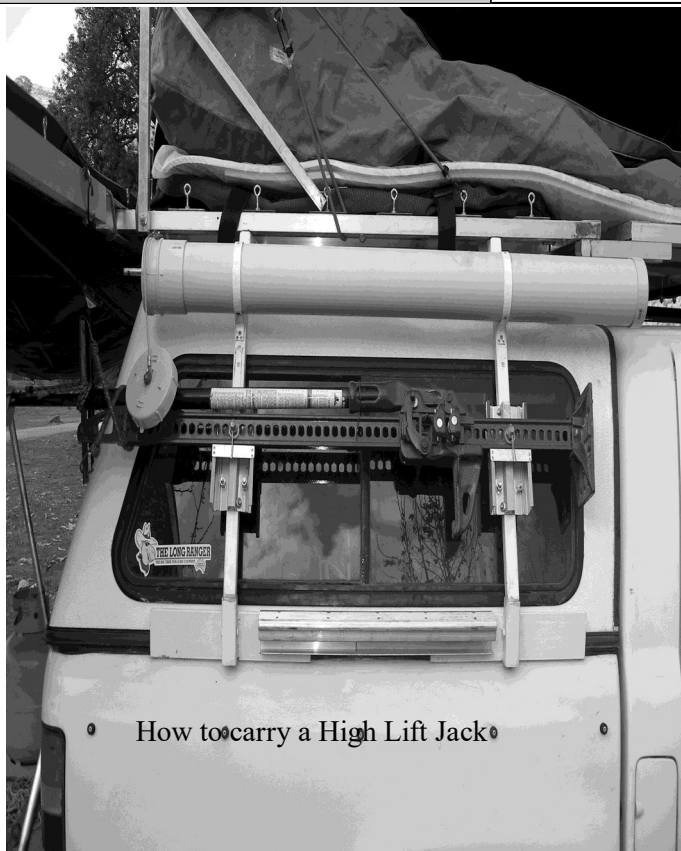
1) I will start a "thread" on the Forum under "President's Ponderings". It is an opportunity to say what you think.

2) I will ask David Rossiter (Communication) to create a poll in 2 weeks time after people have had a chance to say what they think.

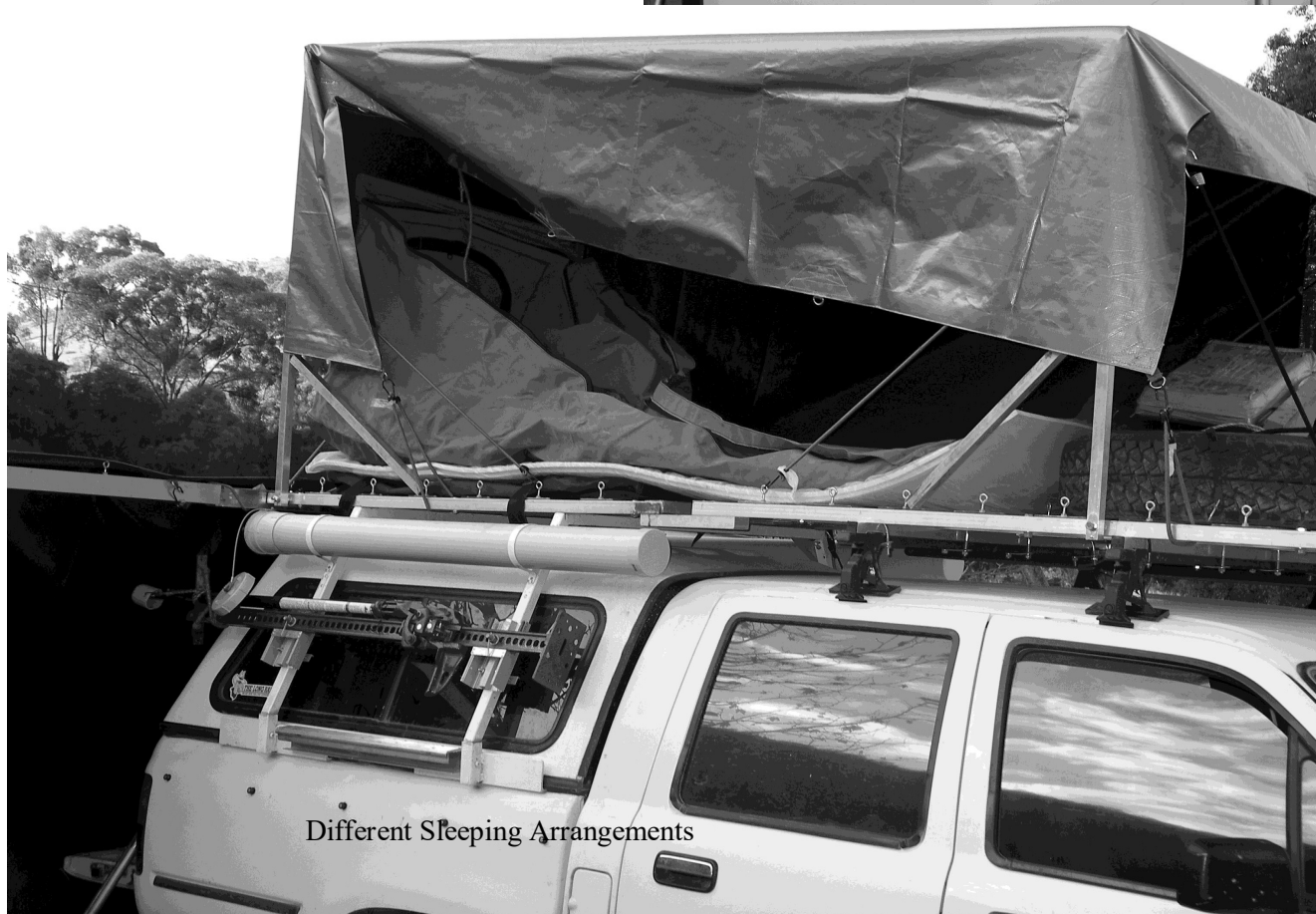
I ask each Delegate when they get this Bulletin to ensure it is discussed at Club meeting. I and members of the Executive, are happy to speak at Clubs on this matter and of course am more than happy to visit your Club and talk about Association activities.

This is a very important matter and I believe is a critical factor in our long term success.

Greg Redfern, President
23 May, 2008



How to carry a High Lift Jack



Different Sleeping Arrangements

The Simpson Desert

09 to 29 April 2008



Heather & John in PJ - Pajero
Charles in Charlie - Maverick
Chris & Julie in Smoko - Nissan
Mike, Trish & Terry in Snobben - Toyota
Wal & Lyn in Heinz - Toyota

This adventure started at a gathering of a few friends at the end of last year. A question was asked if we knew of anyone wishing to join in a Simpson Desert run. Immediately four fingers shot up.

Naturally, as he hadn't been to the Simpson (and we all had), we generously insisted on helping him plan his entire itinerary in micro-detail. Assembled was: Roads, tracks, distances, conditions, permits, bookings, addresses, accommodations, times, contacts, information from the members of the Southern Tablelands, the group's wish list and specialty contact services like the RTA, NRMA, SES, Local Councils, Tourist Information Centres, ExplorOz. These took about 5 months.

(Elsewhere are this trip's stats; Fuels, travel times, distances, accommodation, vehicle injuries, estimates & some costs.)

On completion we presented the plan to our trip lead. Unfortunately he had not fully consulted with "The Boss", who had organised an overseas trip for them. Oops...

Thus Heather and John were volunteered to be forward scouts.

09 April - Canberra to Nyngan 572kms 8hrs*.

- ♦ About our recorded daily kilometres travelled and the times taken... These include all stops at points of interest, smokos, lunches & etc.

The departure was set to Neville Simpson's time of 8:00am on the 09th of April... but about the meeting place. Wal and Lyn live in Maroochydore QLD, Charles was departing from Sydney NSW, Mike, Trish and Canadian relative Terry were leaving Canberra later in the day taking roads out-west NSW,

while Chris, Julie, Heather and John would depart from Hall on the ACT border. All are or were members of the Southern Tablelands 4WD Club.

The plan was to group in the corner country town of Tibooburra at the end of the second day. Well, that was the plan that nearly worked.

The first day out was an easy 8-hour blacktop admin run to Nyngan's Riverside Caravan Park. With the promise of an overnight stay in pre-booked cabins, we'd later head down the road for meals at the local RSL. Nyngan was where we were joined by Mike, Trish and Terry.

The Gang at Poeppel Corner



10 April - Nyngan to Tibooburra 647kms 9.5hrs. Consulting the group's wish list, Heather and John had desired to experience the Bourke-Wanaaring-Tibooburra back country. A long 9 and a 1/2 hour day but a worthwhile experience.

Sundown and 15kms out of Tibooburra, the crackling exchanged on channel 14 announced our imminent arrival to Wal & Lyn, who had arrived the day before via south-western Queensland tracks. Ahh yes, that first cold drink was awaiting us. Thank guys.

The Simpson Desert

While we still had that better CDMA mobile phone coverage, we checked in with our next wish list requester - Charles, to determine just how far out he may have been. Oh... Singleton, about 180kms north of Sydney. The clutch packed it in and it would take most of the next morning for the repairs.

Charles was determined to continue however, and suggested that we should go on and he'd catch us up in a day or two.

Thus having settled into The Granites Motel, completed our brief happy hour duties, we wandered up the main street to Tibooburra's Family Hotel for dinner.

11 April - Tibooburra to Innamincka 346kms 9hrs.

Refuelled and packed with those last minute goodies, we departed Tibooburra for Cameron Corner. Here we stopped at the Corner Store and were most fortunate to encounter both Dog Fence maintenance men. Word was that the younger fellow had been on the fence for a couple of years while the other had been there most of his life... following in the foot steps of his father and grandfather. What a buzz it was yarning with these gentlemen about their work, experiences, history and daily life.

After the obligatory corner photographs and a bite to eat, we consulted the group's wish list again. Charles had requested to share with us the Bollards Lagoon's Bore Track to Innamincka.

Earlier we'd contacted Gina & Grant at Bollards seeking guidance and permission for using their track. There's a fee of \$10 per vehicle, payable at the homestead, which included a mud map. Armed with up to date local knowledge, we headed north to the Innamincka Regional Reserve boundary.

Again, what a stunning sand country experience that eventually gave way to that overwhelming Sturts Stony Desert. And imagine looking at this country through the eyes of the explorer, in mid summer... Awesome!

We eased into the township of Innamincka and sussed out the Hotel for the obligatory afternoon drink (I know, it's hard to believe) and then an inventory check on supplies being held next door at the Trading Post.

An entry on the wish list by Mike, Trish & Terry would have us in the company of Julie & Geoff, owners of Cooper Creek Homestay. Great meals and accommodation. Here we jawed late into the evening with our hosts and several Santos staff about their lives, this country and the proposed geothermal electricity happenings.

Our gratitude goes out to Julie for the constant feedback on the waters of the Cooper. Since those Queensland summer rains, water had come down the Barcoo River into Cooper Creek and was still overflowing the causeway by about 350mm.

Working the Line



12 April - Innamincka to Coongie 124kms 6.75hrs. The next morning we packed and headed to Chris and Julies' wish list location. Coongie Lake is normally a couple of hours drive north of Innamincka. However, we stopped for smoko and explored Scrubby Camp Waterhole, where Heather couldn't resist having a swim. Further up the track we stopped and took a look at the Kudriemitchie Outstation also on the banks of the Cooper.

The Simpson Desert



On arriving at the vast expanse of Coongie, we did the obligatory information noticeboard followed by a sightseeing reccie to locate that just magic bush campsite. Well, we found it on the 4wd track. One of those big healthy shady gum trees on the edge of the lake, giving us sun protection for most of the day. Heather was happy with her access to the private swimming pool and we had a nice and windy sandhill to keep the flies and mozzies down to a dull roar. And we had the whole place to ourselves. Bargain!

The only downside of the area for us 4WD campers is the "No camp fires mate". But hey...

On the second day, our long lost, worn out Charles quietly slipped into camp. He'd pushed hard to catch us up and we were all glad that the group was finally complete.

For Charles' benefit we extended our camp to a third day, giving him time for recuperating, sightseeing, repacking and general fiddling, as only Charles can do.

15 April - Coongie to Innamincka 136kms 3hrs.
This morning we packed up and headed backtracked to Innamincka. Here we found a camp site on the crowded Town Common.

That afternoon was given up to "whatever activities", where some invaded the town's immaculate Laundromat and their (\$4) showers.

Late afternoon and Heather naturally harassed John about fishing in the Cooper. Results: One fish (20cm), a rabbit (opposite bank), two eagles (a wild geese-timate) and many fishy stories prior to gathering at the Hotel for happy hour and dinner.

16 April - Innamincka to Birdsville 545kms 10.5hrs
The wish list was brought out again. Heather and John wanted to do Walker Crossing Track

from Innamincka to someplace/anyplace short of the Birdsville Track. We had split the Birdsville distance in half, expecting to find a maze of grotty, demanding and confusing tracks. WRONG. Santos had reworked all the main tracks to a pleasant high-way speed.

The Walker Crossing at Cooper Creek was bone

dry. Although the waters were flowing into Coongie Lake via the northern Cooper, it had not yet spilt down to this part of the Walkers.

We stopped here for a smoko to examine the monument erected by Santos staff as a mark of respect to one of their own - Sydney Walker.

Once again we encountered Sturt Stony Desert and stopped for lunch at a location nominated by Julie. Hot, totally exposed, windy but with an awesome 360-degree view... You wouldn't be dead for quids.

By mid-afternoon the Walkers Track had been enjoyed and experienced. The wish list was once again consulted and noted was Charles' suggestion for doing the Birdsville Inside Track. So turning left onto The Track, PJ headed off towards Tasmania until Chris suggested trying his shortcut to Birdsville via Goyders Lagoon's Inside Track - just where he was stopped... I knew that..!

And so, off we went on this new adventure, until reaching the Diamantina River/Goyders Lagoon crossing. "Now those local cows' footprints sank about 30cm into that black oozy slush just under the dry splitting crust". "I don't think so", was the low encouraging mumbles from the crowd at the back. Cowards!

So to Plan B. An extra 125kms on the Outside Track to Birdsville, in the late afternoon sun, with loads of hanging dust... followed by setting up camp in the dark and then being forced to have dinner at the Birdsville Hotel.

17 April - Birdsville.

We camped at Birdsville for 2 nights suffering hot showers, reading, relaxing, preparing, doing tourist things, eating fresh healthy local bakery goodies (8/10 on the Paul Tolley Pie Scale) and stocking up on those fresh supplies that only the fortnightly roadtrain brought into town on Friday morning. We were fortunate to make the acquaintance of one Andrew Teakle, a photographic artist. Andrew spent a couple of days in our company and shared some of his finest photographs, publications and experiences (Interested? Take a look at his work: www.tesseractphoto.com).

We provided Andrew with a handheld radio and he

The Simpson Desert



shared in our mayhem on the day we departed Birdsville. He joined us out to Little and Big Red and from a later email, Andrew stated that he could well imagine the fun and banter over the radio, as our dust disappeared into the west.

The Simpson Desert Run.

Friday 18 April - 95kms, 5.66hrs.

Armed with all the Club's training, our collective experiences, research, information, maps and electronics - we eased down the western face of Big and Little Red and commence our push towards the west on the QAA Line... or so we thought.

Easing down Little Big Red

Down at the base of the next dune was a tag-along group of about 8 vehicles, some dragging off-road vans.

We hung back at a respectable distance to observe a smaller 4x4 with trailer being repeatedly thrashed up towards the top of this dune. After about half-an-hour of this, the tour leader hooked the van on and eventually dragged the whole lot over.

We then took a closer look at another trailer they'd left behind and read their notice, stating that the van hadn't been abandoned. There were a few grins as some looked back towards Big Red and Birdsville.

This was sand dune number two... and it doesn't take much rocket science to work out the state of the track by this stage.

Already on lowered tyre pressures, we all eased over without drama and scarpered to the west, finding our Camp QAA some 95kms out of Birdsville.

Saturday 19 April - 172kms, 7.33hrs.

Our morning's departure was delayed due to some further alterations to Heinz.

Heather and John had wished to try heading west over a few more sand dunes after the K1 turnoff and come into Poeppel Corner from the north. Unfortunately we caught up with the tour group at the end of the QAA Line, and seeing the continuing struggles with those trailers, we locked ourselves into turning south on the K1 Line.

We'd reckoned that the QAA Line had been a reasonable soft-topped challenge until hitting the

French Line. Here we worked with tyre pressures down to 14psi, as the track had taken a fair hammering.

The lunch stop at Poeppel was hot, as we jockeyed for positions under the small information board's overhang. We'd spent about 45 minutes taking the pictures and sharing lunch with 3 kazillion flies, when we became aware of a hum of vehicles coming out of the north. Time for moon-vin-out.

Mike, Trish and Terry's wish list plan was to backtrack to the K1 and head south for about 85kms to Kuncherinna Junction. This was an easy interdune run to where the K1, Rig and Warburton tracks come together.

At this junction we planned to turn west, heading for the intersection of the WAA Line on the AAK Track about 110kms... or so we thought.

Now most of us have seen a few sand dunes - some easy, some not so easy - but... Arriving we turned right and took to the top of the first sand hill and parked for an assessment. Here we discovered that the wind blown soft top dropped straight down about 3 metres and was sitting on top of the rest of the normal dune.

The Oil Rig Road track could clearly be seen heading out to the next dune but terminating about halfway up its side. So out with the binoculars to discover that the next 6 or 7 dunes were identical. Bugga..!

The Simpson Desert



The difficulty was that once committed to easing down this first western face there was no easy way of getting back, as the inquiring north/south tracks of a lone traveller had discovered. (According to Google satellite imagery, the nearest alternative for our lone traveller was to head south for about 25kms to where this dune terminated.)

From our side of the dune the only fuel sensible option was to backtrack to the French Line, as the Warburton Diamantina crossing to the Birdsville Track was also closed.

Thus we resolved to established Camp Kuncherinna Junction and head back in the morning.

Sunday 20th April - 165kms, 8.5hrs.

Rise and shine for we move off at 8:00am sharp to do that extra 50kms to the intersection of the WAA and AAK... or so we thought.

Now PJ had some minor difficulties with the inner mudguard in 2004, when the guard developed a fatigue crack from the onslaught of 7 months of corrugations.

This was repaired and the auxiliary battery reinstalled in its cradle. Unfortunately one electrical wire had been severed, dutifully repaired and hooked-up to the main battery... the refrigerator wire. Sigh.

Yep that's it... click, click of the starter motor's solenoid. Out with the jumper leads, a quick top-up voltage from Charles' vehicle and... click, click. And so to the voltage meter. Mmm, 7.5 volts, a completely collapsed starting battery.

Charles to the rescue with his new Allrounder deep cycle starting battery. We exchanged his unit with PJ's deep cycle, so that his fridge would keep his beer cold. We then disengaged all of PJ's other electrics so that at the end of the day, the fridge was the sole device drawing power.

Nine o'clock and all was humming again. Our thanks to Charles, the many hands and supervisors.

Lesson # 58.72 - Batteries: We've taken a look at the benefits of purchasing two all-in-one deep cycle starting batteries. There are a few on the market that will do the job (from \$260 Allrounder to the \$900+ Odyssey).



The Battery Exchange

We retraced our steps to the French Line and then headed west again. What a mess. We couldn't wait to get off this butchered 40-k stretch. The tag-along could be still heard on the radio encountering the same stupid problems in the 40+degree heat (we recorded 58 in the sun). We also encountered a couple of short wheel base cowboys - no flags, no radios, no low pressures, no idea - just flogging it east

Eventually we headed south on the AAK Track, pausing at the rise of the "Knolly Thing" for a welcome cuppa and that magic 360 view to the horizon.

Apart from the mandatory photo stops at Jacks and Linnie Junctions, the run down to Camp WAA was most enjoyable. This event was capped with one of those "Only in the desert" sunset. The end of a long and demanding day for the whole group. Well done team.

The Simpson Desert



Our convoy was armed with 2 HF transceivers and each evening Smoko or PJ would report into the VKS737's radio network. On this occasion Chris received an update on the WAA Line's condition from Adelaide Base, stating that a fellow member was now camped some 90kms west of us. "No traffic encountered. Very soft sand blows but ok on low (14 to 16psi) tyres".

Mmm... 16piss should do it...!



could not be clearly seen.

A couple of hours before sundown we were prompted again by Chris' "Well goodness gracious me... Look at the time." and found us stopping at the Colson for smoko. Here there were some discussions about the fuel situation. PJ had been showing intermittent traces of the fuel's warning light.

(A reasonable fuel calculation? On the last trip with Master Neville Simpson in 2001, PJ used 105 litres for the Oodnadatta-Birdsville run. Since then, we've replaced the 92 litre tank with a 136 litre job. As we did then, we took a 20 litre jerry can. A reasonable safety margin of 44 litres, or at worst, 265kms? WRONG.)

The wish list plan was to use the Colson Track north to the French Line and then work our way west to Dalhousie Springs. But considering the appalling state of the French and PJ's fuel situation, it was agreed to take the easier mud capped Rig Road and join the French Line further down towards Dalhousie.

Monday 21st April - 107kms, 8hrs:

Early breakfast, to beat the 2.7 ka-zillion Poeppel related flies, and a slow pack up. Then we headed out to find the intersection of the Erabena Track for morning smoko.

This was to become our slowest day of progress. Soft sand had covered all the tracks over the top of the dunes and each required searches for safe deviations. Frequently the lead vehicle was required to stop while the passenger assessed alternatives and provided guidance. A great team effort. There were many unseen wind blown holes on the western side, occasionally 2 metres deep.

Naturally there were accusations of cheating, taking of short cuts, the occasional fully controlled sideways 4-wheel drift, while noted were the locations of 3 Spinifex-Seed-Cameras prior to reaching the Colson Track.

Also interesting to note was the effective combination of the wind and shifting sands. Wheel tracks, less than 24 hours old of the vehicle in front of us,

Another perfect day in paradise ended with the establishment of Camp Rig Road, some 29kms west of the Colson.

The only difference between this camp and that of the Camp QAA 4 days earlier, was the forced distance between each of the campers. Even Terry lodged a protest about the body aromas drifting on the night air.

To Be Continued

Club Clothing

The Club clothing or a name badge can be ordered from Kathy Solomos at the monthly Meetings.
Payment for any item is expected when ordering.

Jackets	\$70.00
Shirts:	\$35:00
Vests:	\$45:00
Caps:	\$15:00
Hat:	\$15:00
Beanies:	\$15:00
Name Badges	\$10.00

Look for the sign on a table at
Meetings

Kathy Solomos 0402 051 623



Mobile: 0402 051 623



Telephone: (02) 6280 6416 Unit 1/68 –70 Kembla Street
Facsimile: (02) 6239 1606 PO Box 1113
Email: sales@wattscom.com.au Fyshwick ACT 2609
Web Address: <http://www.wattscom.com.au> ABN 62 008 641 923

We are a one stop communications shop providing GARMIN GPS and Navigational equipment, Vehicle Tracking, UHF and AM CB radios, Marine VHF & UHF radios, HF Radios, Commercial Two-Way radios, Hands Free Kits for mobile phones, sales and rentals of Mobile and Satellite phones, HF, UHF and Commercial radios.

Our installation bay is fully equipped to undertake installations into all types of vehicles.

Our workshop has qualified technicians who undertake the repair of HF Radios, AM/UHF CB's and UHF/VHF Marine radios, commercial radios – mobile and hand held.

We are the sales and service agents for the following brands:

GARMIN, GME-ELETRAPHONE, ICOM, KENWOOD, UNIDEN, MOTOROLA, SIMOCO, AND TAIT. We can also provide satellite phones on the Iridium and Globalstar satellite networks.

“SAFE ONE” BASIC 4WD VEHICLE OPERATION COURSE

*The Southern Tablelands Four Wheel Drive Club conducts **two-day weekend Driver Training** exercises, with **Follow-up Days** on the **Sundays, 1 week later.***

Purpose:

To introduce new & old club members to vehicle equipment, daily maintenance, recovery techniques & equipment, and in particular teach them the skills necessary to safely operate their 4WD in a variety of terrains.

Meeting Time/Place:

Service Station in Bredbo (right hand side of highway) no later than 8.00 am on Saturday.

**The Club's Education Coordinator is Peter Reynolds,
Tel (h) 6251-1258 or (m) 0428 623-458.**

**PLEASE BOOK A PLACE ON ONE OF THESE COURSES WELL IN ADVANCE AND ALSO RING PETER ONE WEEK BEFORE THE COURSE TO CONFIRM ATTENDANCE!
IF YOU DON'T, YOU WILL LOSE YOUR PLACE ON THE COURSE**

ONLY ONE DRIVER PER VEHICLE PER COURSE, THOUGH A SUPPORT CREW IS WELCOME.

COURSES FOR 2008 WILL BE HELD ON

23RD, 24TH FEBRUARY	WITH FOLLOWUP ON	2ND MARCH
17TH, 18TH MAY	WITH FOLLOWUP ON	25TH MAY
30TH, 31ST AUGUST	WITH FOLLOWUP ON	6TH SEPTEMBER

WHAT TO BRING

Yourself & family and a 4WD in good mechanical condition
Camping gear for overnight stay
Food and Cooking gear for 2 days
Chairs to sit on in lessons and around the fire
Recovery gear, if you have it, but not essential
Garbage bags for all your rubbish to take home
Notebook & pen
Camera
A full tank of fuel
Torch
Drinking water.
UHF Radio (optional – talk to Peter)
Front and Rear Recovery Points preferred.

There is a large First Aid Kit at Talooge. Also a large gas BBQ

PLEASE DO NOT BRING PETS OR FIREARMS.

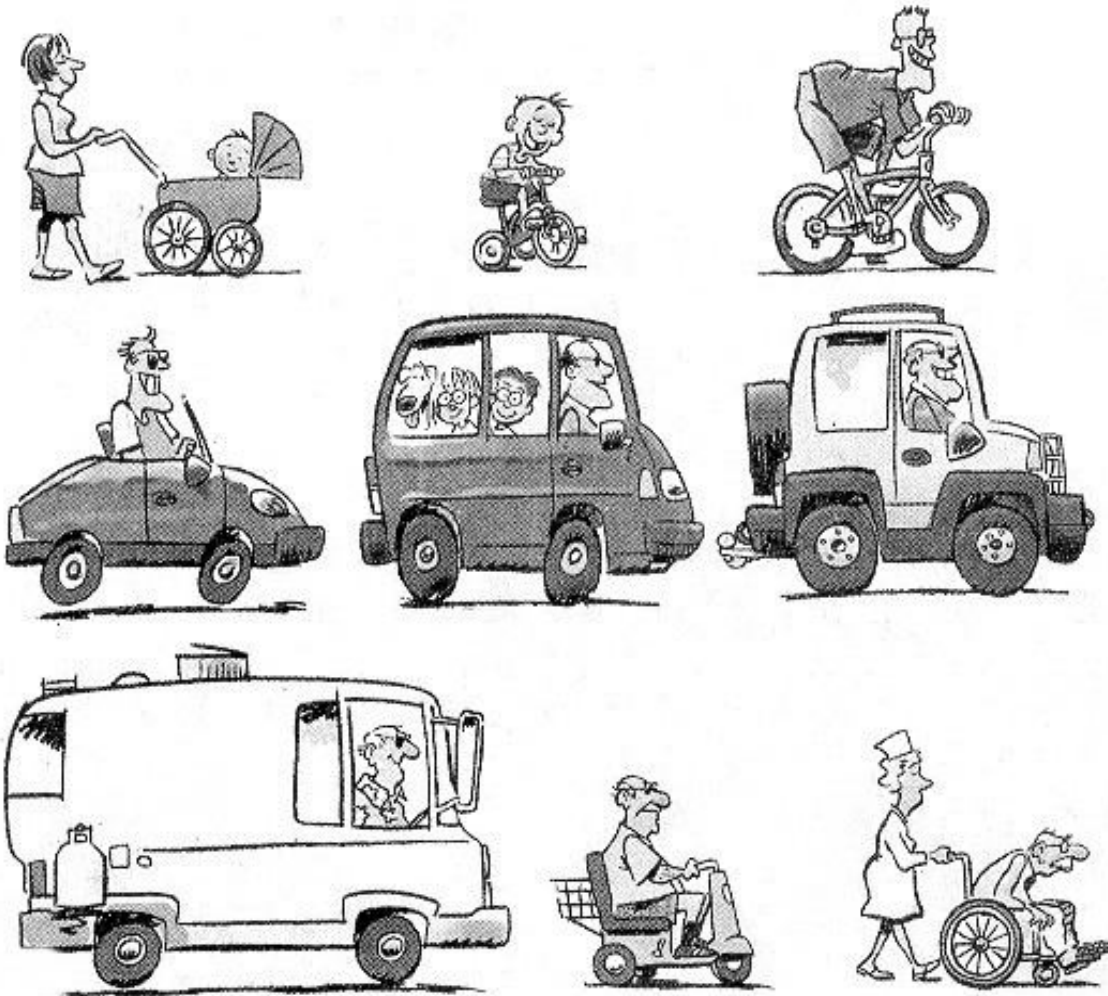
Snowy Mountain Challenge



The Wheels of Life



The Wheels of Life



I Am not sure if this is politically correct so I apologise to all Poms and my Wife

One day an English bloke was driving around the backblocks of Sydney, when he saw a little girl in the paddock next to him. With the little girl was a gigantic bull, that was preparing to gore the little girl.

The Pom took action. He slammed on the brakes of his car, jumped out, ran over and jumped the barbed wire fence, grabbed the bull by it's horns, flipped it over and broke it's back.

An Aussie reporter saw the whole thing, and not being aware that the guy was English he rushed over to congratulate him.

"That was absolutely bloody fantastic mate! It'll make front page news, just give me your details,"

So the Pom gives him his details. A day later he buys the newspaper and looks at the headline. It reads

POMMY BASTARD KILLS CHILDS PET.

GET A GRIP



With ARB Air Locker locking differentials, you can tackle the toughest terrain. The world's premier traction aid for more than 20 years, Air Lockers keep you moving in all conditions.

- 100% traction at the flick of a dash mounted switch
- Super strong locking mechanism activated via compressed air
- Ultra durable design using aerospace grade materials
- Easy installation and maintenance
- Over 100 part numbers covering most vehicle models
- Used by the best in the toughest events, from the Outback Challenge to the Xtreme Winch Series

ARB Air Locker diff locks... your ticket to adventure.

ARB 4x4 Accessories is Australia's largest manufacturer and distributor of 4WD equipment.



4x4 ACCESSORIES

ACT: 188-190 Gladstone St, Fyshwick 2609. Tel: (02) 6280 7475 Fax: (02) 6239 1124

ARB accessories are available from offices in every state and stockists in most larger regional centres. Web: www.arb.com.au Email: sales@arb.com.au

WE WON'T LET YOU DOWN.



ACT

Automotive & Offroad Centre

4WD Specialists



ACT Automotive & Offroad Centre can carry out:

- New vehicle services while under new car warranty
- Pre-trip inspections
- Modifications to equip your vehicle for your big trip
- Minor to major services
- 4WD wheel alignments
- 4WD wheel balances
- Pre-purchase inspections
- Engine overhauls
- Rego checks
- Diesel injector servicing
- Gearbox & Diff overhauls
- The supply & fitting of Turbo systems
- The supply & fitting of suspension systems

**NO DEPOSIT.
NO REPAYMENTS
NO INTEREST
FOR 12 MONTHS***

We can also service cars, trucks and buses

We are authorised stockists for:

**ARB • Light Force Lights • OME Suspension Blackwidow storage systems
Eva Kool iceboxes • Kookaburra camping equipment**



We also stock & fit:

**GME UHF radios & antennas • Electronic Shu-Roos • Rancho suspension
Black Rat recovery equipment • Tyre repair kits • Bushranger products**

Tel 6241 8011

*Conditions Apply

**Fax 6241 2282 • 5 Huddart Court Mitchell ACT 2911
info@actoffroad.com.au • www.actoffroad.com.au**

CHANGES TO THE BY-LAWS

At the January meeting of the Committee, approval was given for some changes to the club's By-Laws. These changes were considered necessary to clarify policy on membership renewals, and the entitlement of dependant Family Members to participate in Driver Training Courses.

In regard to membership renewals, changes were made at paragraph 16d and paragraph 19 and particular attention is drawn to paragraphs 19b and 19c. It was decided that dependant 'Family Members' should cease to be entitled to participate in Driver Training Courses once they reach the age of 21 however such 'Family Members' wishing to become 'Owner Members' will have the opportunity to transfer without having to pay a joining fee (See paragraph 19h). The entitlements of each membership category are summarised at paragraph 18.

A complete copy of the updated By Laws is available on the web site and a related change to the Constitution will be proposed at a Special General Meeting in July. (See page 5)

CLUB POLICY

• Applications for Membership

15. The Club's procedures for consideration of applications for new membership shall be based on the following principles -
 - the Committee may require an applicant for 'owner-membership' to provide proof of ownership in the form of a current motor vehicle registration slip for the prescribed vehicle and proof of age by provision of a current driver's licence or birth certificate, or a statutory declaration in their stead;
 - the Committee may require an applicant for 'associate-membership' to provide proof-of-age by provision of a current driver's licence or birth certificate, or a statutory declaration in their stead;
 - all new applications shall be considered and voted on by the Committee at its regular meeting on the motion of the Membership Secretary and the decision shall be notified to the applicant in writing. Any refusal of membership shall only be on the grounds that the Committee was not satisfied that the applicant would abide by the Constitution and By-Laws of the Club;
 - the Application Form(s) for Club membership shall require the applicant to declare the type of membership desired and that criteria for membership is satisfied and attach the appropriate membership fee;
 - the Application Form(s) for Club membership shall require the applicant to declare that they will abide by the constitution and by-laws of the club as extant at any time.
16. The Club's procedures for consideration of applications for renewal of membership shall be based on the following principles:
 - renewal applications received after the close of the February general meeting will be deemed "late"; subject to paragraph (c), the deadline for receipt of applications for renewal of membership for a calendar year shall be ten (10) days before the Annual General Meeting in that year;
 - memberships not renewed will be terminated at the June Committee meeting;
 - applications for renewal of membership received later than the date specified at paragraph 16(b) will be deemed to be new membership applications. Fees payable in such cases are detailed at paragraph 18 below.

Members who have not renewed by March will cease to receive a club magazine until they renew.
17. Prior to making a decision under rule 6(13) of the Club Constitution, the Club Committee will, based on a written submission from a member concerning the grounds on which the member should continue to be a member of the Club, consider the circumstances of the case. This will be carried out on a case by case basis.

• Categories of Membership

18. The rights of each of the categories of membership shall be as follows:

Responsibility/ Entitlement	Owner Member	Associate Member	Competition Member	Family Member	Life Member
Joining Fee Payable	Yes	No	No	No ¹	NA
Membership Fee Payable	Yes	Yes	Yes	No	No
Vote at Monthly General Meetings	Yes	Yes	Yes	Yes	Yes
Vote at Annual and Special General Meetings	Yes	No	No	No	Yes
Join the Committee	Yes	No	No	Yes	Yes
Join a Sub Committee	Yes	Yes	No ²	Yes	Yes
Receive the Club Magazine	Yes	Yes	No	No	Yes
Free access to Talooge Park	Yes	Yes	No	Yes	Yes
Participation in Driver Training Courses	Yes	No	No	Yes	Yes
Participation in Club Events (Subject to clause 20 (2) below)	Yes	Yes	Yes	Yes	Yes

¹ see also Paragraph 19 (h)

² except in the instance of a competition subcommittee

Membership Fees

19 Fees

The joining fee for new Owner Members of the club is \$230 plus the annual membership fee;

A former Owner Member who ceased to be a member for a period of less than 3 consecutive years will be required to pay a re-joining fee of \$30 plus the annual membership fee on rejoining.

A former Owner Member who ceased to be a member for a period in excess of 3 consecutive years will be treated as a new member (see above).

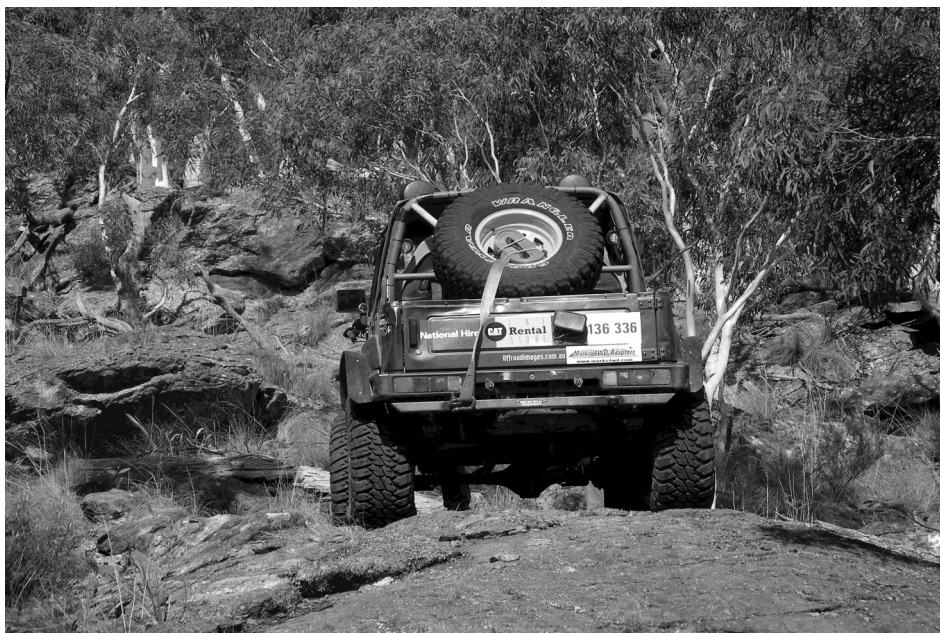
The annual membership fee for Owner Members is \$100;

The first year's membership fee for new applications received after the July general meeting is \$50;

The Annual Membership Fee for Associate and Competition Members is \$50;

The late renewal fee is \$5 for renewals received after the February general meeting.

Family Members, who have satisfactorily completed the 'Safe One' basic driver training course, and wish to become Owner Members, will be exempt from paying the Joining Fee provided their application to become Owner Members is received by the Membership Secretary before their 22nd birthday.



FOR SALE/WANTED/LOST/FOUND



Advertising on this page is **free to members** but is restricted to **Two Months**. Non-members will be charged \$20 per advertisement for 5 lines for the same period.



Toyota Land-cruiser GXL '95 -

One Owner, Manual, Dual Diesel Tanks, ACT Rego until 01/09, 199,000 km, Recently Acquired Coopers A/T Tyres, CB Radio, Air-conditioning, Power Windows, Central Locking, Suspension Airbags, ARB Bull-bar.

This vehicle has been continuously garaged, serviced and maintained. It is in excellent mechanical and internal condition. \$21,000 ono

Daihatsu Feroza II SX '94 -

Removable Hard Top, Removable Roof Rakes, 16 Valve EFI, Cooper Discovery Tyres ATR (Spare Tyre New), ACT Rego until 10/08, Power Windows, Central Locking, CD Player.

This is a reliable and hearty vehicle which is ideally suited for beginners. It has been well maintained and serviced with a good internal and mechanical condition. \$5,000 ono

Toyota Land Cruiser Station Wagon HJ60 Diesel 1984

Bull Bar Driving Lights; Dual Batteries; Extractors; Electric Brakes; Bucket Seats; C D Player
C B Radio; Tinted Windows; Tow Bar; Poly Air Bags; Chrome Wheels; Side Steps

Work Done on the Vehicle

Engine Rebuilt (125,000 km on new motor); New Shocks/Steering Damper;
Rebuilt Alternator; Re Sprayed; New Tyres (20,000 km); Registered until October 2008

Excellent Condition full maintenance

\$ 6,500.00 ono

Phone 02 6236 3335 or 0411 238 734

GU Patrol Wagon

Set of 4 Old Man Emu Nitrocharger Shockers \$ 330.00

ARB 2200 x 1250 roof rack with mesh floor and wind deflector \$ 400.00

2 Brand new 265/75/R16 BFG A/T tyres \$ 490.00

1 Alloy spare wheel with tyre \$ 400.00

Please phone John 0414 489 274

2002 Nissan GU Patrol

4.8lt Petrol 5 speed sport shift auto

Alloy Bull Bar, Cargo Barrier, Tow bar, 2 Owners Full Service History

200,000km, BF Goodrich T/A's with 8-10mm tread

Vehicle is currently located in Bredbo, NSW.

Selling due to getting a lease vehicle through work.

ACT rego 07/08 YDR02E

\$22,000 neg

Call Ethan on 0402476835 for details

For sale – a Porta Potti 365, never been used. \$70. Whole unit sits 40 cm above ground level, base unit capacity is approx 15 litres. Price includes an additional 2 litres of chemicals.

John ph 02 6287 7574. Mob: 0432 737 440

2,000-year-old Himalayan Wellness Product now available in Australia....Soon the world! First time ever in liquid form. Backed by research, money back guarantee. What have you got to lose but lack of wellbeing? Call Ian on 0427400341 email BE2health@FreeLife.com or go to www.BE2health.Freelife.com go to Pacific Rim and click on Australia then explore the site. For technical and medical info and trial results go to

SERVICE DIRECTORY



Battery World
Power for anything...anytime!

Need a Battery for your...



FREE in-store auto Battery Testing and Sales at:

CANBERRA
95 Grenville Court
Phillip
(Behind Discount Tyres)




24hr Roadside Service
13 17 60
www.batteryworld.com.au



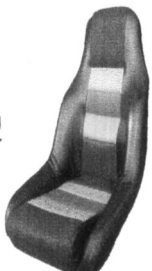
BRAKES, DIESEL & SERVICE
BDS
TUGGERANONG 6293 3044

Miles Goldfinch P: (02) 6293 3044
F: (02) 6293 3055
bds.dialabiz.com E: contact@bds.dialabiz.com

Shop 5, 182-194 cnr Scollay & Reed (South) Sts Tuggeranong A.C.T 2900



An Inside Job



Daniel Swindley

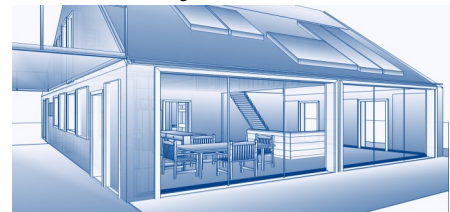
Upholstery
- Modern & Antique
- Full Restorations
- Recovers & Repairs
- Timber Restoration & Polishing

Motor Trimming
- Custom Interiors
- Steering Wheels
- General Recovers & Repairs
- Marine Trimming.

Mob: 0418 410 227
ABN 41925274155

Design Assist

"Unique sustainable design solutions for a comfortable energy efficient home, all year round"



- Energy efficient design, training, and product information
- Advanced computer energy simulation and realistic 3D home modelling
- Suits new and existing homes

Frank Green 0413 333 354

Sustainable Design Consultant

DesignAssist@Yahoo.com.au

www.DesignAssist.com.au

Billiard House

ACT's Leading Special Supplier of
Quality Slate Tables for Over 30 Years

New & Used Tables
Moving Service
Reclothing
Full Range of Accessories
Restoration & Repairs

Gerry Silvano

Showroom:
167 Newcastle Street Fyshwick ACT 2609

Postal Address:
PO Box 247 Fyshwick ACT 2609

Phone/Fax (02) 6280 6626
sales@billiardhouse.com.au
www.billiardhouse.com.au

Est. 1974

8

Off - Road Camper Trailer Hire

trailers@unbound.com.au

Hard Top
All-terrain

Bookings & Enquiries
0412 866 375

T-van
Hire by the
Month/week/weekend
fully equipped





NEW MEMBER APPLICATION

SOUTHERN TABLELANDS 4WD CLUB INC.

PO BOX 661 FYSHWICK ACT 2609

www.st4wdc.org



First year membership \$330.00 - Ongoing Years \$100.00

The Club membership year is from 1 January to 31 December. (Rates effective from 1 January 2004.)

Please forward this form and your cheque / money order to ST4WDC at the above address.

Membership entitles the member and partner to attend the Club's training courses, including Basic 4WD Vehicle Operation Course, Very Difficult Terrain and Advanced Recovery, River Crossings, Sand Driving, Mud and Snow Driving, Navigation, Map Reading and GPS courses.

Full membership of the Club (and participation as a driver on Grade 2-5 trips) requires successful completion of the Club's training courses according to the Trip Grading shown elsewhere in this magazine, or recognised equivalent prior learning / qualification approved by the Club's Education Coordinator.

Following the Club's acceptance of your membership application, you should contact the Club's Education Coordinator (Mr Peter Reynolds, 6251 1258 AH or 0428 623 458 to be allocated the next available position on a scheduled Basic course. If you are unable to attend the allocated course, you will be allocated the next available position on a later course.

Member 1: (Preferred first name, last name)

Member 2: (Preferred first name, last name)

Address:

Suburb: State: Postcode:

Preferred contact phone:(h)(w)(m)

E-mail:

Vehicle Make: **Model:** **Registration number:**

(Optional) Personal Details: Member 1

Member 2

(Occupation)

(Relevant skills / additional info)

How did you find out about the ST4WDC ?

Upon acceptance of this application, then for the duration of my membership, I agree to abide by the Constitution of the Southern Tablelands Four Wheel Drive Club Inc, together with any Club By-laws as they apply from time to time.

Signed: (Member 1)..... Date:

Signed: (Member 2)..... Date:

Form & fees received: Fees forwarded to Treasurer:

Membership database updated: Membership package despatched:

Membership Card: Receipt Number:

Training Surcharge (\$200) paid Total received: \$.....

Other comments: